

Housing-Based Urban Planning ?

Sir Patrick Geddes' Modern Master Plan for Tel Aviv, 1925



Figure 1: Edinburgh Old Town Tenements and repairing, 1911. Source: Geddes Archive, University of Strathclyde.



Figure 2: Repairs of Edinburgh Old Town Tenements, 1911. Source: Geddes Archive, University of Strathclyde.

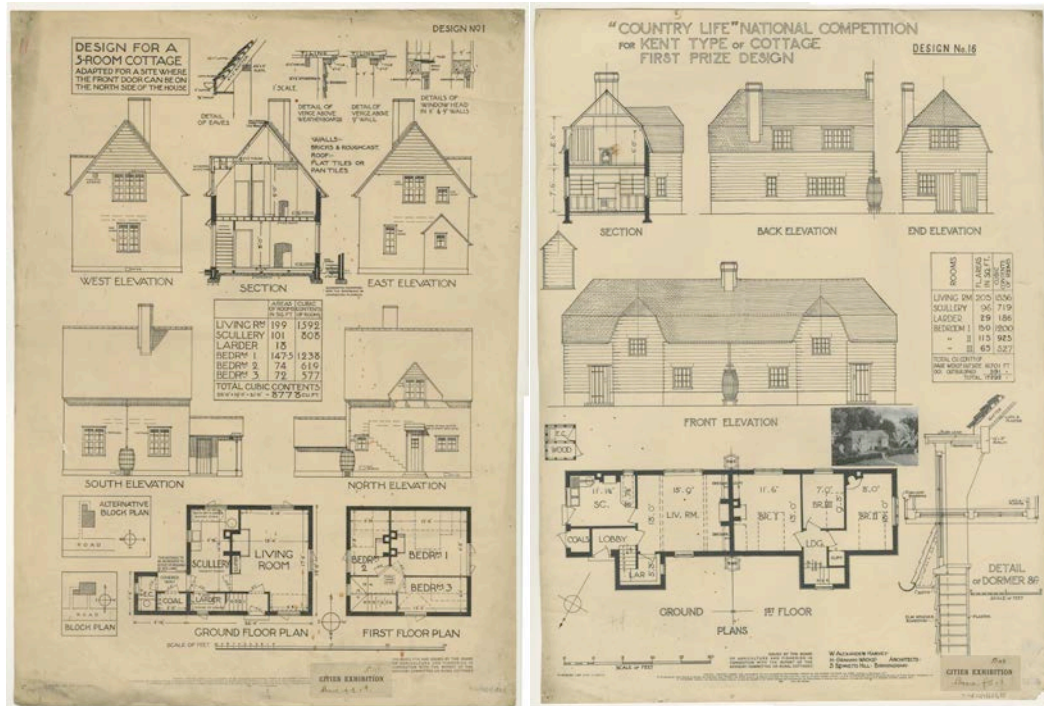


Figure 3: House type drawings. Source: Geddes Archive, University of Strathclyde.

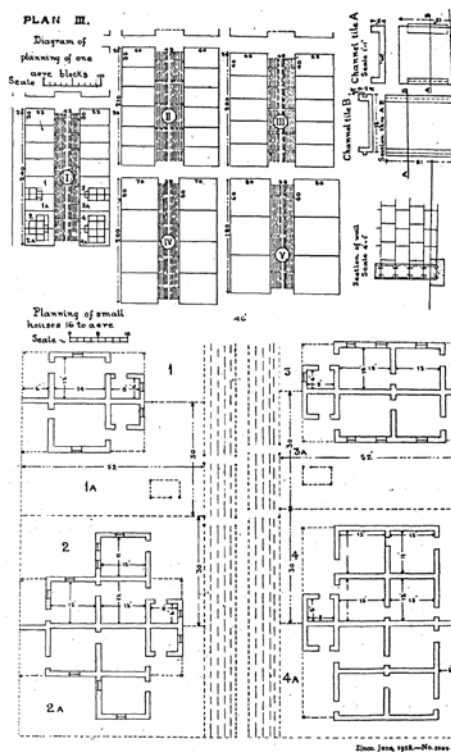


Figure 4: Indore expanding worker housing proposal. Source: Geddes, 1918.

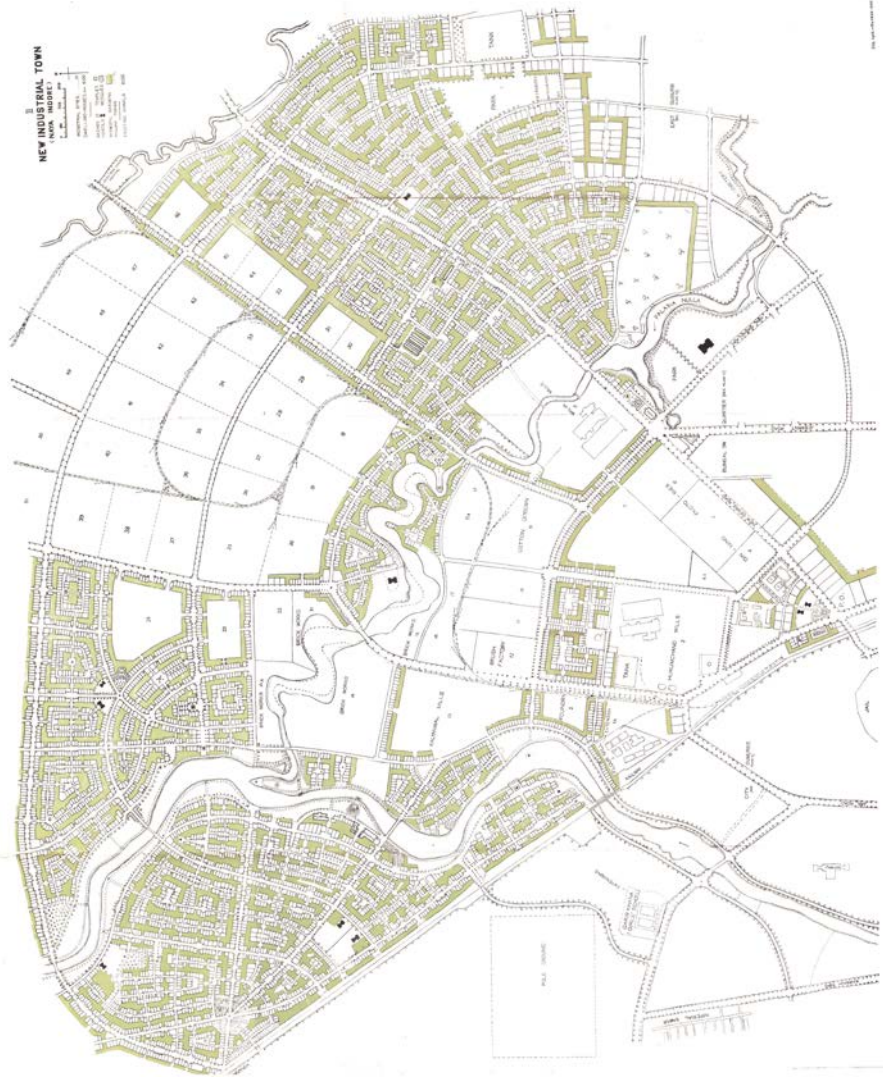


Figure 5: Indore urban block explorations. Source: Geddes, 1918.



Figure 6: The Shapira Alley cottages versus nearby tenement. Source: Geddes Archive, University of Strathclyde.

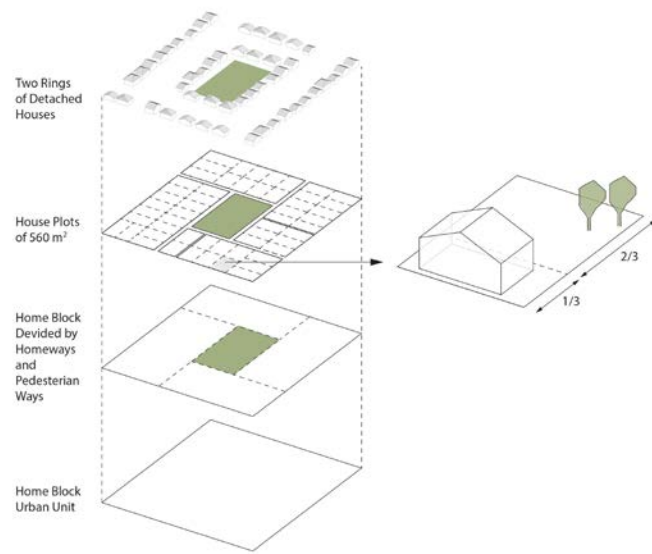


Figure 7: Geddes block scheme. Schemes by Author.

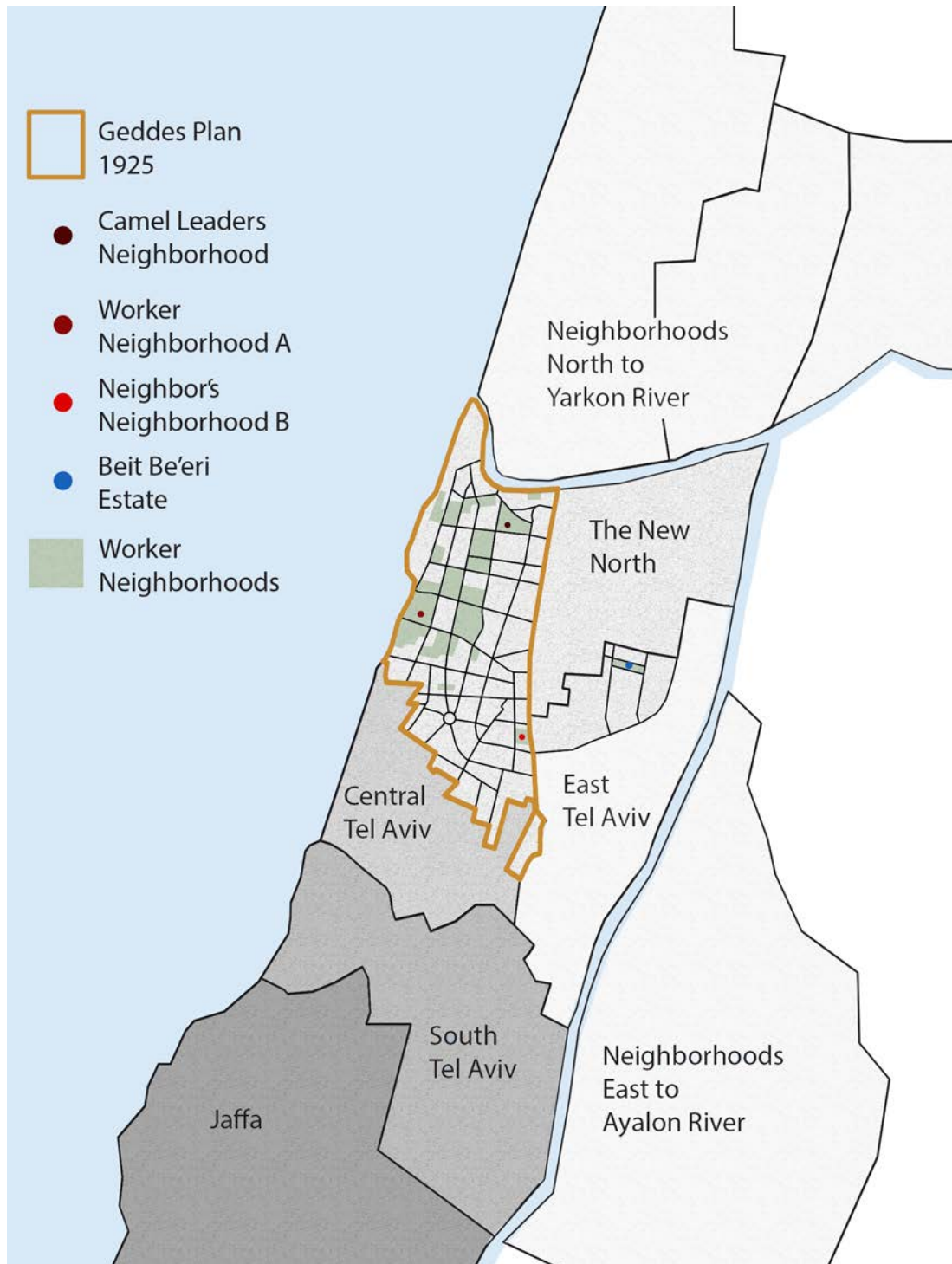


Figure 8: Scheme of the Geddes plan area within contemporary Tel Aviv-Jaffa area, with the location of Worker Neighborhood A, Neighbors' Neighborhood B, Camel Leaders Neighborhood and Be'eri Estate. Source: Author.

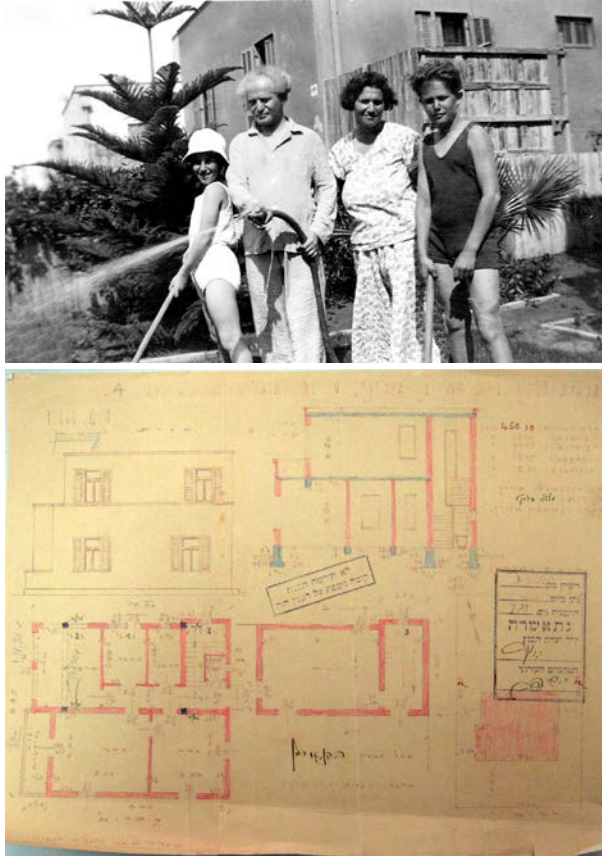


Figure 9: Ben Gurion family in front of their house, Worker Neighborhood A, 1935. Source: Aner, 1988. Building permit for Worker Neighborhood A, 1933. Source: Tel Aviv Technical Archive.

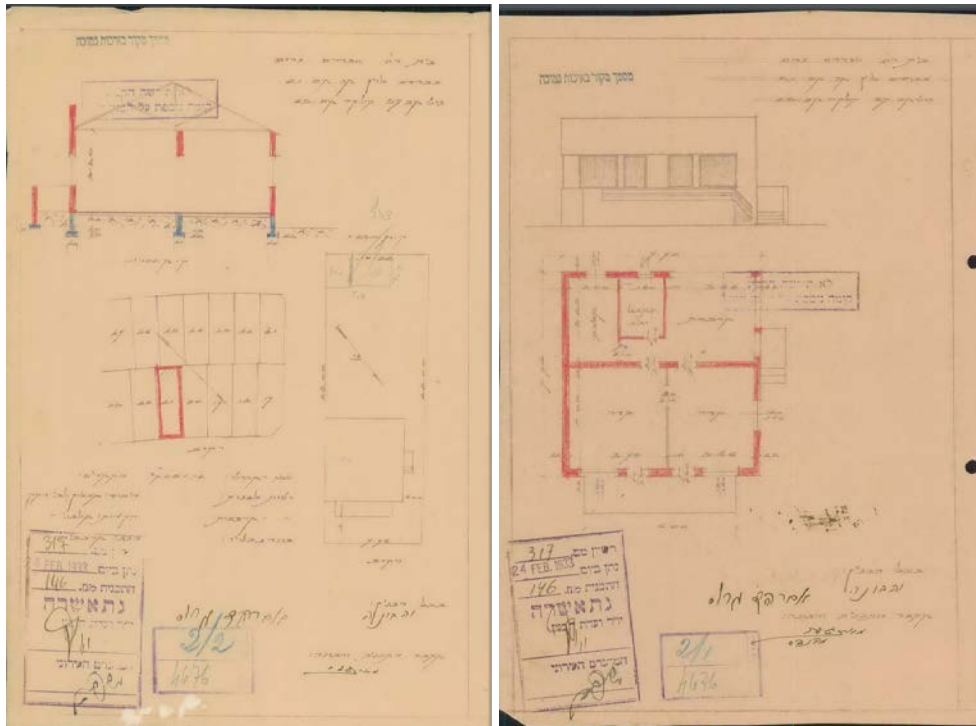


Figure 10: Camel Leaders' Neighborhood, permit for Yeshayahu 36. Source: Tel Aviv Technical Archive.



Figure 11: Neighbors' Neighborhood C, circa 1934. Source: Tel Aviv 100.

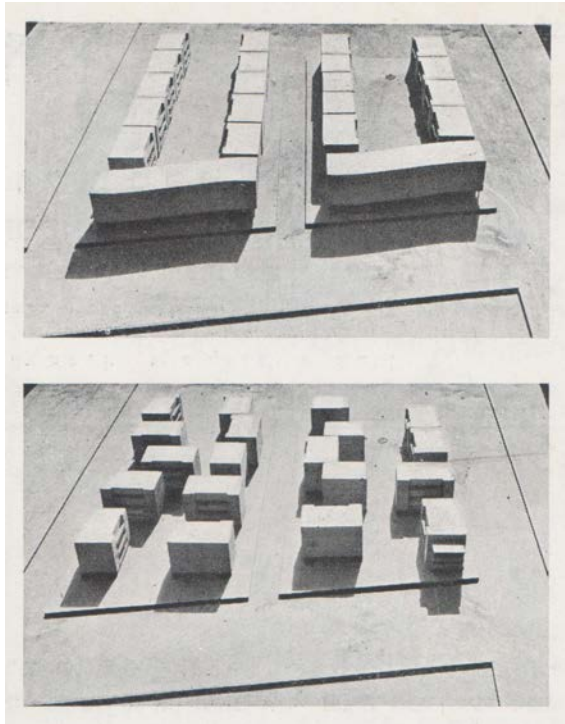


Figure 12: Arie Sharon's proposal for Me'Onot Ovdim (worker residence) in response to Tel Aviv home-block densification. Source: Arie Sharon Archive, Azrieli Archive for Israeli Architecture.



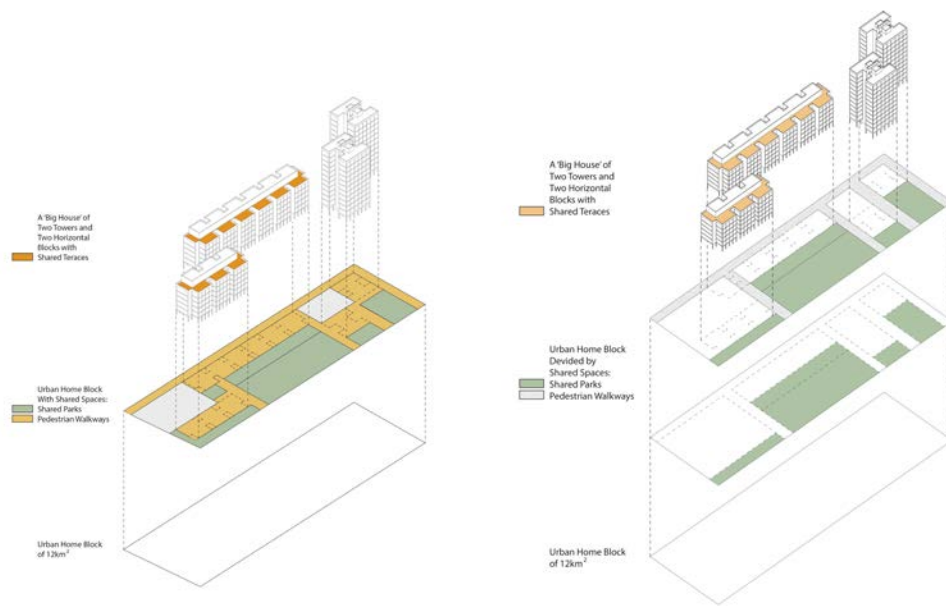


Figure 15 Be'eri estate home-block. Scheme by Author.