

## Supplementary Material

Figure 1.



**Centre for Research on Peace and Development - CRPD** X ⋮  
Sponsored · 🌐

How do you feel about inequalities in Kenya?

Register now to take part in our survey. Selected participants will get 140 Shillings worth of airtime.

We are looking for adults (18+) residing in Kenya to share their opinions. This project is approved by the KU Leuven Social and Societal Ethics Committee (reference G-2022-5987-R3(AMD)).

For more information on our research see:  
<https://soc.kuleuven.be/crpd>



**REGISTER NOW**

[kuleuven.eu.qualtrics.com](https://kuleuven.eu.qualtrics.com)  
**Register now. If selected you get 140 KES of airtime**

**Sign Up**

Figure 2. Distribution of variables which make up index for 'perceived political exclusion'

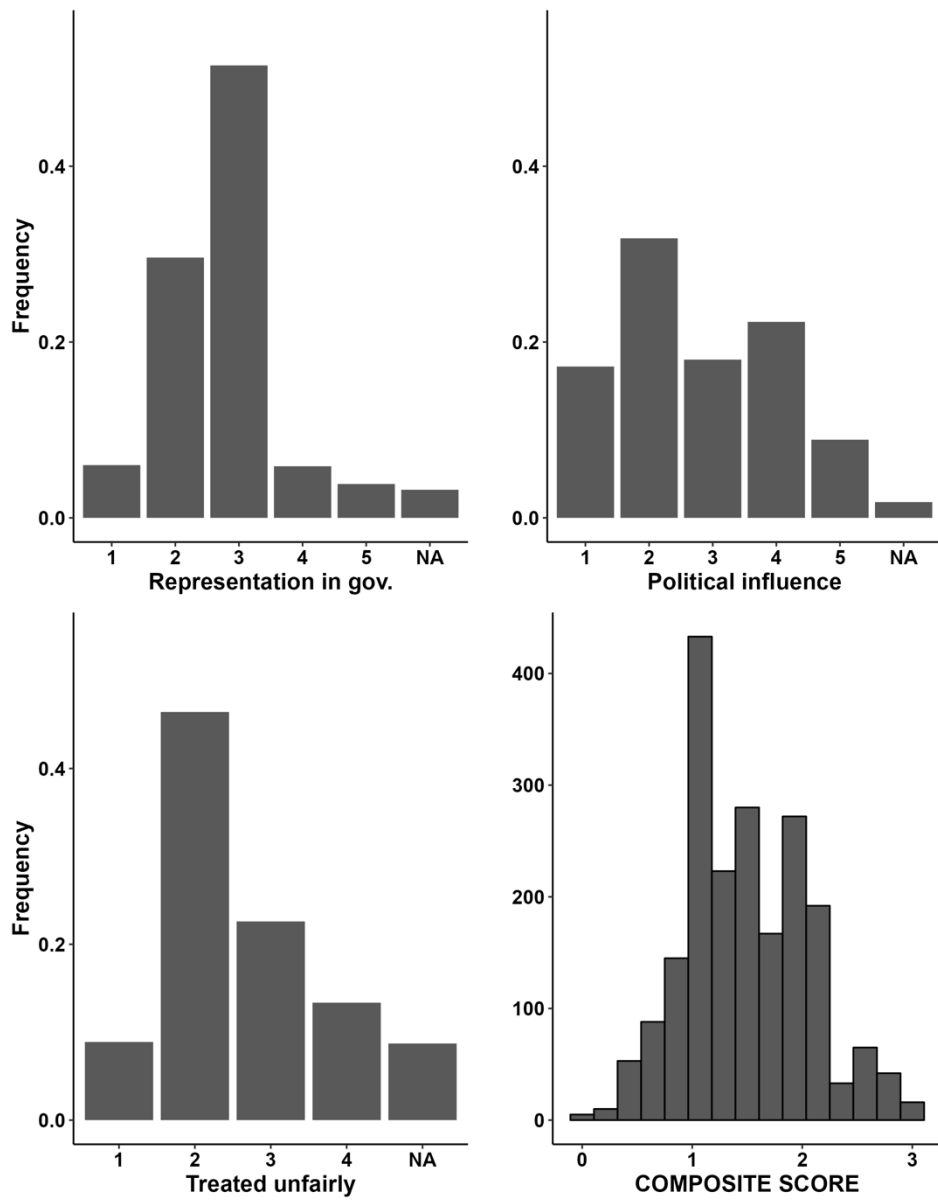


Figure 3. Distribution of variables which make up 'Acknowledgement of political exclusion'

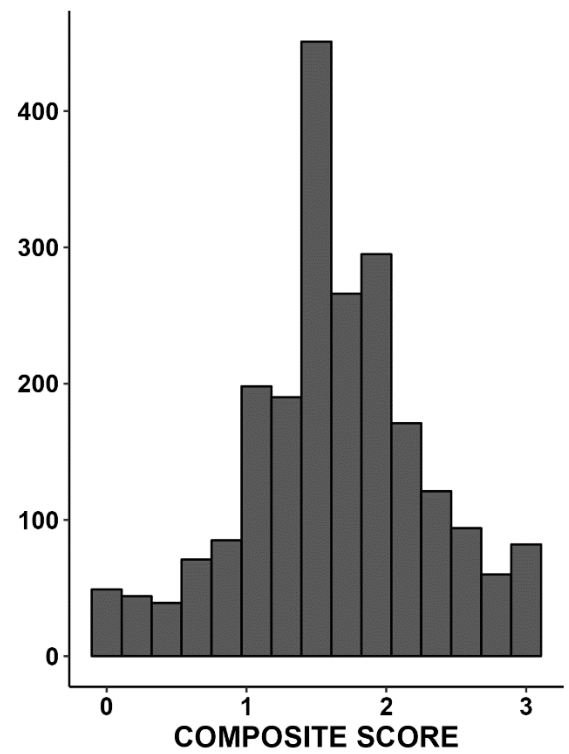
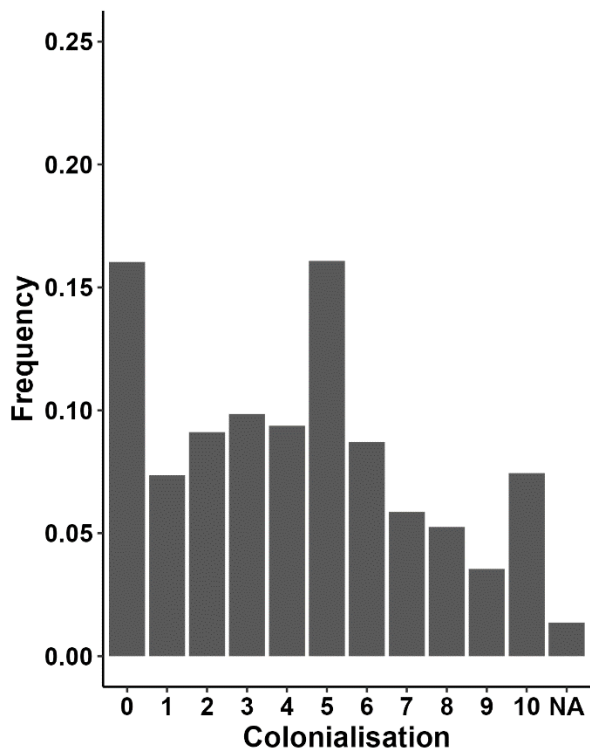
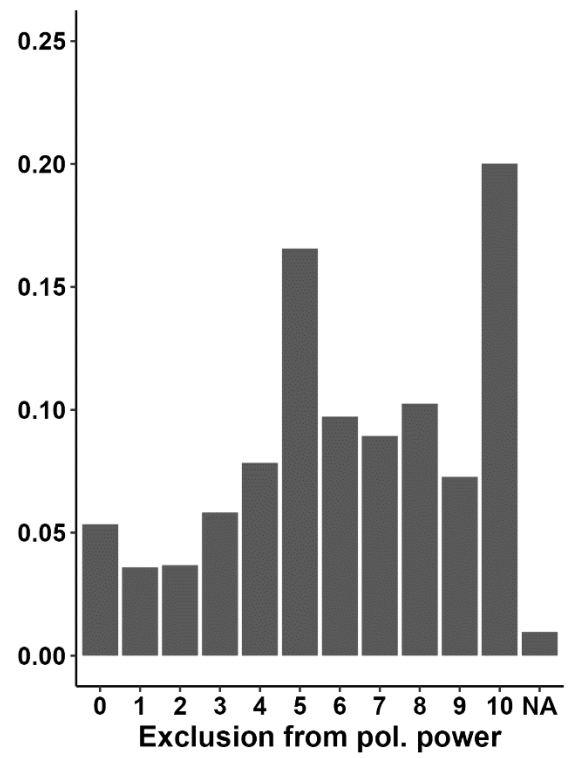
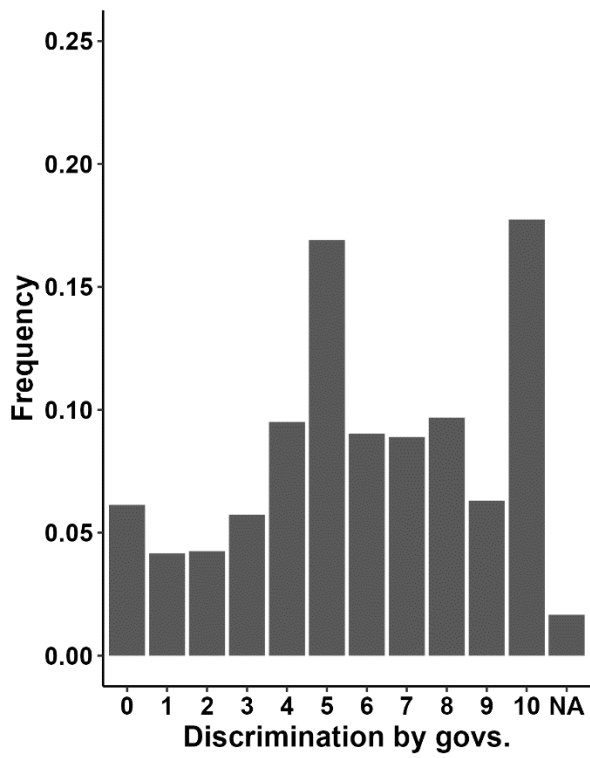


Table 1. Explaining attitudes towards horizontal redistribution using proportional odds (PO) modelling

	PO1 (general)	PO2 (general)	PO3 (general)	PO4 (general)	PO5 (general)
Intercept					
Perceived pol. exclusion (own)	0.129 (0.089)	-0.805*** (0.189)			-0.859*** (0.198)
X Large excl. groups		1.176*** (0.227)			0.915*** (0.242)
X Small excl. groups		1.258*** (0.256)			1.224*** (0.274)
Acknowledgement pol.			0.310*** (0.065)	0.010 (0.108)	-0.025 (0.123)
X Large excl. groups				0.576*** (0.148)	0.392* (0.167)
X Small excl. groups				0.240 (0.182)	0.061 (0.203)
Perceived HI severity					0.163*** (0.020)
National identification					0.029 (0.017)
Group poverty					-0.125* (0.050)
Age					0.039*** (0.005)
Gender (ref. male)					
Female					0.122 (0.093)
Residence (ref. large city)					
Small city					0.243* (0.108)
Village					0.116 (0.122)
Political exclusion (ref. incl.)					
Large excluded groups	0.248* (0.109)	-1.166*** (0.308)	0.165 (0.094)	-0.744** (0.251)	-1.430*** (0.403)
Small excluded groups	-0.003 (0.131)	-1.575*** (0.378)	-0.009 (0.113)	-0.358 (0.313)	-1.643*** (0.482)
Num.Obs.	2010	2010	2196	2196	1913
R2					
R2 Adj.					

Table 1. Explaining attitudes towards horizontal redistribution by ethnic group (OLS modelling)

	OLS 1
(Intercept)	8.696*** (0.576)
Perceived pol. Exclusion (own)	-1.466*** (0.327)
X Kalenjin	(ref.)
X Kamba	1.394** (0.470)
X Kikuyu	0.841 (0.452)
X Kisii	1.252* (0.494)
X Luhya	1.326** (0.404)
X Luo	1.710*** (0.405)
X Meru	1.465* (0.596)
X Mijikenda	1.434 (0.794)
X Somali	3.562*** (0.940)
X Other	2.548*** (0.512)
Acknowledgement pol. exclusion	0.002 (0.212)
X Kalenjin	(ref.)
X Kamba	0.037 (0.327)
X Kikuyu	-0.008 (0.276)
X Kisii	0.419 (0.349)
X Luhya	0.646* (0.274)
X Luo	0.158 (0.307)
X Meru	0.235 (0.461)
X Mijikenda	0.375 (0.591)
X Somali	-0.224 (0.555)
X Other	-0.557 (0.449)
Perceived HI severity	0.174*** (0.022)
National identification	0.032 (0.018)
Group poverty	-0.121* (0.057)
Age	0.034*** (0.006)
Gender (ref. male)	
<i>Female</i>	0.049 (0.105)
Residence (ref. large city)	
<i>Small city</i>	0.375** (0.122)
<i>Village</i>	0.152 (0.138)
Ethnicity	
<i>Kalenjin</i>	(ref.)
<i>Kamba</i>	-1.296 (0.838)
<i>Kikuyu</i>	-0.937 (0.664)
<i>Kisii</i>	-2.144* (0.875)
<i>Luhya</i>	-2.283*** (0.680)
<i>Luo</i>	-2.113** (0.725)
<i>Meru</i>	-1.979 (1.123)
<i>Mijikenda</i>	-2.475 (1.613)
<i>Somali</i>	-5.234** (1.606)
<i>Other</i>	-2.456* (1.003)
Num.Obs.	1913
R2	0.108
R2 Adj.	0.091