

Negative Party Identification and the Use of Party Cues in Direct Democratic Decision-Making - Supplementary Materials

Maxime Walder¹ and Oliver Strijbis²

September 2022

¹ Post-doc, University of Geneva, maxime.walder@unige.ch

² SNF Förderungsprofessor, University of Zurich, strijbis@ipz.uzh.ch

Appendix

In this section, we present the additional material not included in the paper. Figure A1 presents the correlation matrix for party support in the experimental design. Figure A2 displays the share of ballots where left and right parties had the same position. Table A1 presents the results of the regression model conducted with the experimental results. Table A2 to A5 presents the results for the four regressions conducted for the observational design. Finally, Table A6 tests the balance of the treatment groups with regards to respondents' age and gender. Table A7 tests for potential posttreatment bias in the measurement of the moderator.

	FDP	CVP	SVP	SP	GPS
FDP	1.00	0.35	0.30	-0.37	-0.28
CVP	0.35	1.00	0.07	-0.07	-0.03
SVP	0.30	0.07	1.00	-0.58	-0.58
SP	-0.37	-0.07	-0.58	1.00	0.69
GPS	-0.28	-0.03	-0.58	0.69	1.00

Figure A1: Correlation matrix of the respondents' support for the five main parties

	FDP			
FDP	1.00	SVP		
SVP	0.736	1.00	SP	
SP	0.488	0.27	1.00	GPS
GPS	0.428	0.236	0.925	1.00

Figure A2: Share of same positions on ballot proposals of the two left parties (SP and GPS) and the two right parties (SVP and FDP)

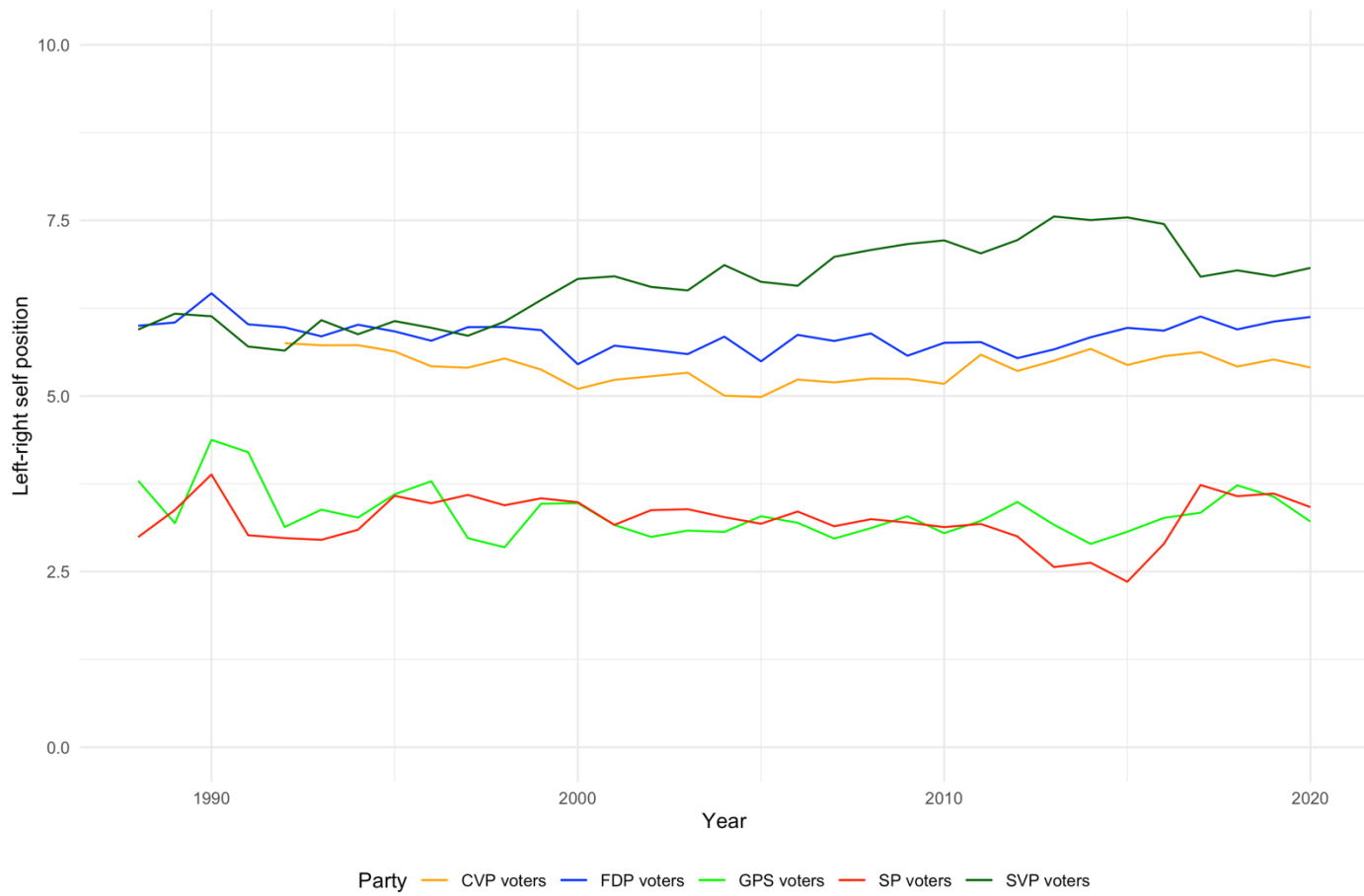


Figure A3: Average left-right self-placement of party voters (1981-2020)

Table A1: Regression results of the experiment.

	DV: Policy preferences
Treatment GPS	-0.374 (0.34)
Support GPS	0.124*** (0.03)
Treatment SP	-0.698* (0.327)
Support SP	0.263*** (0.032)
Treatment FDP	0.183 (0.483)
Support FDP	-0.180*** (0.032)
Treatment SVP	0.044 (0.324)
Support SVP	0.066** (0.025)
Treatment CVP	0.316 (0.454)
Support CVP	-0.008 (0.034)
Trust in government	-0.115 (0.083)
Political interest	-0.771*** (0.152)
Treatment GPS x Support GPS	0.034 (0.06)
Treatment SP x Support SP	0.113+ (0.067)
Treatment FDP x Support FDP	-0.077 (0.076)
Treatment SVP x Support SVP	-0.044 (0.053)
Treatment CVP x Support CVP	-0.084 (0.083)
Constant	1.129** (0.399)
Observations	1,776
Log Likelihood	-803.685
Akaike Inf. Crit.	1,643.371

*Note: * $p < 0.1$; ** $p < 0.05$; *** $p < 0.01$*

Table A2: Regression results for the interaction effect of vote recommendation of the SP and the SVP on their respective voters

	DV: Policy preferences
Recommendation SVP	-0.326*** (0.058)
Recommendation SP	1.388*** (0.059)
Party (SP versus SVP)	-0.529*** (0.086)
Recommendation CVP	0.322*** (0.050)
Recommendation FDP	0.213*** (0.036)
Recommendation GPS	0.435*** (0.044)
<i>Direct democratic institution (reference: Initiative)</i>	
Facultative referendum	0.061 (0.056)
Mandatory referendum	0.389*** (0.060)
Counter proposal	0.423*** (0.063)
Strength SP	-0.339 (0.425)
Strength SVP	0.701*** (0.136)
Recommendation SVP x Recommendation SP	0.484*** (0.071)
Recommendation SVP x Party	2.266*** (0.092)
Recommendation SP x Party	-1.373*** (0.090)
Recommendation SVP x Recommendation SP x Party	-1.353*** (0.110)
Constant	-1.237*** (0.116)
Observations	57'210
Log Likelihood	-33,062.630
Akaike Inf. Crit.	66,157.260

*Note: *p<0.1; **p<0.05; ***p<0.01*

Table A3: Regression results for the interaction effect of vote recommendation of the SP and the FDP on their respective voters

	DV: Policy preferences
Recommendation FDP	1.067*** (0.058)
Recommendation SP	-0.393*** (0.056)
Party (SP versus FDP)	-0.418*** (0.050)
Recommendation CVP	0.698*** (0.050)
Recommendation SVP	0.122*** (0.029)
Recommendation GPS	0.438*** (0.040)
<i>Direct democratic institution (reference: initiative)</i>	
Facultative referendum	0.161** (0.057)
Mandatory referendum	0.476*** (0.060)
Counter proposal	0.376*** (0.063)
Strength SP	2.188*** (0.423)
Strength FDP	-0.883*** (0.251)
Recommendation FDP x Recommendation SP	0.107+ (0.060)
Recommendation FDP x Party	-1.025*** (0.064)
Recommendation SP x Party	2.209*** (0.058)
Recommendation FDP x Recommendation SP x Party	-0.156* (0.080)
Constant	-1.616*** (0.108)
Observations	62'195
Log Likelihood	-35,050.040
Akaike Inf. Crit.	70,132.090

*Note: *p<0.1; **p<0.05; ***p<0.01*

Table A4: Regression results for the interaction effect of vote recommendation of the GPS and the SVP on their respective voters

	DV: Policy preferences
Recommendation SVP	-0.165*** (0.025)
Recommendation GPS	0.351*** (0.025)
Party (SVP versus GPS)	-0.119*** (0.027)
Recommendation CVP	-0.002 (0.014)
Recommendation FDP	-0.006 (0.010)
Recommendation SP	0.070*** (0.013)
<i>Direct democratic institution (reference: initiative)</i>	
Facultative referendum	0.053*** (0.015)
Mandatory referendum	0.085*** (0.016)
Counter proposal	0.135*** (0.017)
Strength GPS	-0.209* (0.106)
Strength SVP	0.263*** (0.040)
Recommendation SVP x Recommendation GPS	0.175*** (0.030)
Recommendation SVP x Party	0.551*** (0.028)
Recommendation GPS x Party	-0.395*** (0.028)
Recommendation SVP x Recommendation GPS x Party	-0.220*** (0.034)
Constant	0.296*** (0.025)
Observations	30'111
Log Likelihood	-18,381.060
Akaike Inf. Crit.	36,794.110

*Note: *p<0.1; **p<0.05; ***p<0.01*

Table A5: Regression results for the interaction effect of vote recommendation of the GPS and the FDP on their respective voters

	DV: Policy preferences
Recommendation FDP	0.204*** (0.012)
Recommendation GPS	-0.062*** (0.012)
Party (FDP versus GPS)	-0.081*** (0.014)
Recommendation CVP	0.127*** (0.014)
Recommendation SVP	0.056*** (0.007)
Recommendation SP	0.075*** (0.011)
<i>Direct democratic institution (reference: initiative)</i>	
Facultative referendum	0.094*** (0.015)
Mandatory referendum	0.130*** (0.016)
Counter proposal	0.121*** (0.016)
Strength GPS	-0.766*** (0.119)
Strength FDP	-0.575*** (0.083)
Recommendation FDP x Recommendation GPS	0.042*** (0.012)
Recommendation FDP x Party	-0.319*** (0.018)
Recommendation GPS x Party	0.603*** (0.017)
Recommendation FDP x Recommendation GPS x Party	-0.092*** (0.023)
Constant	0.362*** (0.022)
Observations	35'096
Log Likelihood	-20,382.830
Akaike Inf. Crit.	40,797.650

*Note: * $p < 0.1$; ** $p < 0.05$; *** $p < 0.01$*

Table A6: Balanced treatment test for gender and age – average treatment effect on the gender and age of respondents.

	Gender	Age
Treatment FDP	0.029 (0.038)	-0.020 (0.077)
Treatment CVP	-0.019 (0.038)	-0.088 (0.077)
Treatment SVP	0.012 (0.038)	-0.003 (0.077)
Treatment SP	0.016 (0.038)	0.073 (0.077)
Treatment GPS	0.029 (0.038)	-0.020 (0.077)
Constant	1.481*** (0.027)	2.557*** (0.054)
Observations	2070	2070
R2	0.001	0.002
F Statistic (df = 5; 2064)	0.463	0.905

*Note: * $p < 0.1$; ** $p < 0.05$; *** $p < 0.01$*

Table A7: Analyses of posttreatment effect – average marginal treatment effect on party support (with no cofounders)

	Support SVP	Support FDP	Support CVP	Support SP	Support GPS
Treatment FDP	-0.055 (0.144)	0.057 (0.131)	0.029 (0.123)	-0.082 (0.143)	0.055 (0.140)
Treatment CVP	-0.188 (0.144)	0.001 (0.131)	-0.102 (0.122)	-0.195 (0.143)	-0.192 (0.140)
Treatment SVP	-0.246+ (0.144)	-0.009 (0.131)	-0.070 (0.122)	-0.194 (0.143)	-0.055 (0.140)
Treatment SP	-0.431** (0.144)	0.034 (0.131)	-0.073 (0.122)	-0.214 (0.143)	-0.139 (0.140)
Treatment GPS	-0.050 (0.144)	-0.092 (0.131)	-0.105 (0.123)	-0.164 (0.143)	-0.158 (0.140)
Constant	3.009*** (0.102)	1.728*** (0.093)	1.458*** (0.087)	2.435*** (0.101)	2.484*** (0.099)
Observations	2070	2070	2070	2070	2070
R2	0.006	0.001	0.001	0.002	0.002
F Statistic (df = 5; 2064)	2.528*	0.299	0.408	0.684	0.963

*Note: * $p < 0.1$; ** $p < 0.05$; *** $p < 0.01$*