

Online Appendix

The Effect of Parties on Voters' Satisfaction with Democracy

Miroslav Nemčok

Correspondence to: miroslav.nemcok@helsinki.fi

List of Tables

Table A1. Summary of the ESS interviews used in the analysis (i.e., conducted within +/- 30 days from a government replacement date).....	3
Table A2. Statistical estimates of satisfaction with democracy.....	4
Table A3. The effect of difference in party vote shares on satisfaction with democracy.....	5
Table A4. The effect of difference in party seat shares on satisfaction with democracy.....	6
Table A5. The effect of feeling close to a party on satisfaction with democracy.....	8

List of Figures

Figure A1. Distribution of interviews conducted within +/- 30 days from a government replacement date.....	2
Figure A2. Comparison of estimated pre- and post-government replacement satisfaction among winners and losers depending on party seat shares.....	7

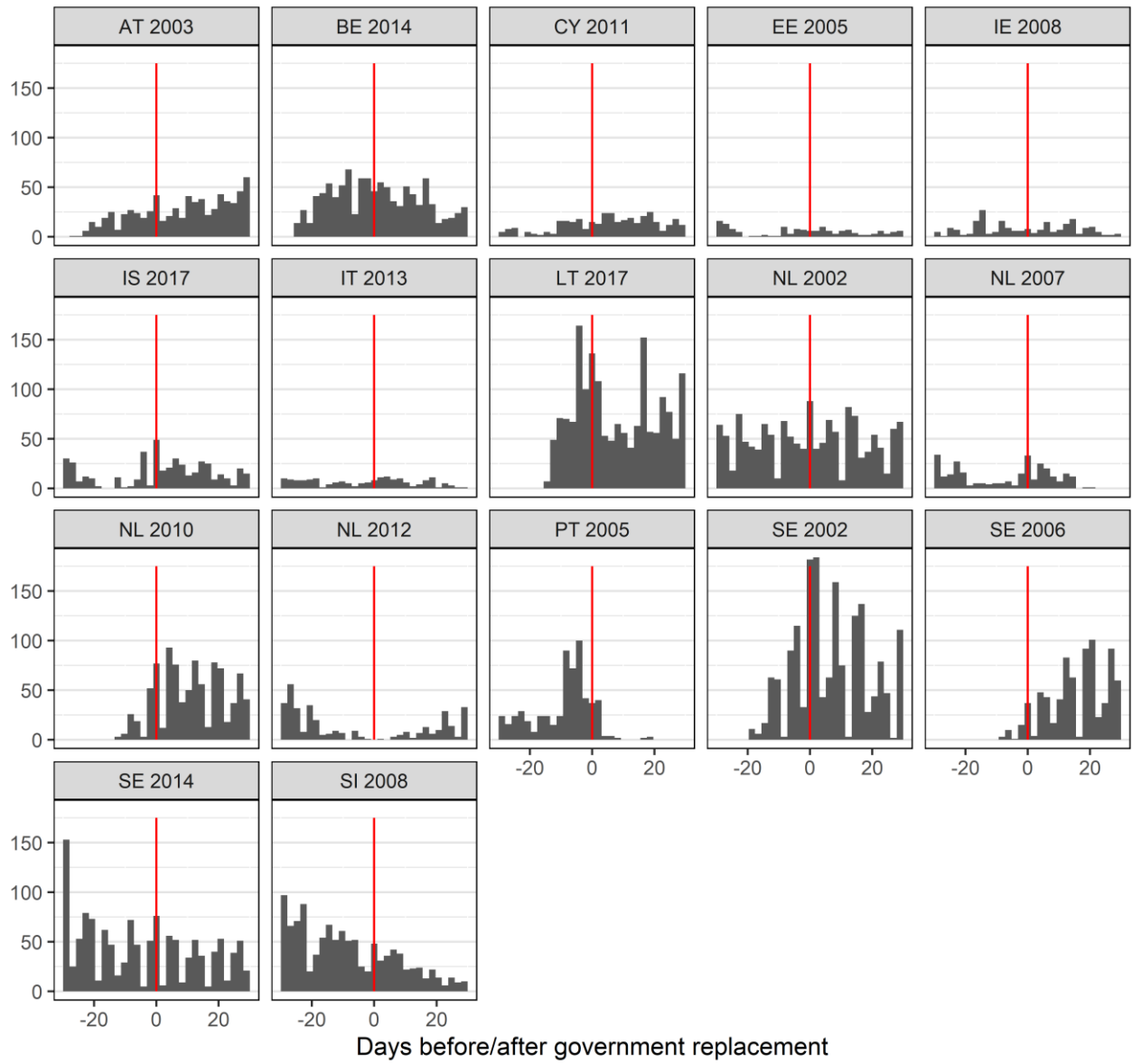


Figure A1. Distribution of interviews conducted within +/- 30 days from a government replacement date.

Table A1. Summary of the ESS interviews used in the analysis (i.e., conducted within +/- 30 days from a government replacement date).

Country	Abbr.	ESS round	Event Label	Government replacement date (mm/dd/yyyy)	Interview before elections	Interview before elections (%)	Interviews after elections	Interviews after elections (%)	Total interviews
Austria	AT	1	AT 2003	2/28/2003	217	30.43%	496	69.57%	713
Belgium	BE	7	BE 2014	10/11/2014	518	50.00%	518	50.00%	1036
Cyprus	CY	5	CY 2011	5/22/2011	122	33.61%	241	66.39%	363
Estonia	EE	3	EE 2005	4/5/2007	80	52.98%	71	47.02%	151
Ireland	IE	3	IE 2008	6/14/2007	116	51.33%	110	48.67%	226
Iceland	IS	8	IS 2017	1/10/2017	168	37.84%	276	62.16%	444
Italy	IT	6	IT 2013	11/18/2013	92	50.55%	90	49.45%	182
Lithuania	LT	8	LT 2017	10/19/2017	577	33.98%	1121	66.02%	1698
Netherlands	NL	1	NL 2002	10/16/2002	697	48.40%	743	51.60%	1440
Netherlands	NL	3	NL 2007	2/22/2007	169	58.28%	121	41.72%	290
Netherlands	NL	5	NL 2010	10/14/2010	141	15.38%	776	84.62%	917
Netherlands	NL	6	NL 2012	11/5/2012	228	62.98%	134	37.02%	362
Portugal	PT	2	PT 2005	3/12/2005	518	85.90%	85	14.10%	603
Sweden	SE	1	SE 2002	10/21/2002	402	23.91%	1279	76.09%	1681
Sweden	SE	3	SE 2006	10/5/2006	42	5.43%	731	94.57%	773
Sweden	SE	7	SE 2014	10/2/2014	751	59.41%	513	40.59%	1264
Slovenia	SI	4	SI 2008	11/21/2008	776	69.72%	337	30.28%	1113

Table A2. Statistical estimates of satisfaction with democracy.

	(1)	(2)	(3)	(4)
Days (before/after event)	-0.003 (0.003)	-0.012 (0.007)	-0.009 (0.006)	-0.005 (0.006)
After (government replacement)	0.439*** (0.086)	0.377** (0.139)	0.355** (0.120)	0.181 (0.117)
Status change (Reference = Stayed loser)				
Became loser	0.524*** (0.071)	0.121 (0.197)	0.147 (0.169)	0.362* (0.175)
Became winner	0.333*** (0.066)	0.072 (0.191)	0.171 (0.165)	0.332* (0.169)
Stayed winner	0.274*** (0.058)	0.307 (0.168)	0.327* (0.144)	0.416** (0.141)
Female			-0.130** (0.040)	-0.121** (0.039)
Satisfaction with economy			0.514*** (0.010)	0.466*** (0.010)
Education			0.106*** (0.015)	0.130*** (0.016)
Age			-0.002 (0.001)	-0.001 (0.001)
Days * After		0.015 (0.009)	0.006 (0.008)	0.004 (0.008)
Days * Became loser		-0.021 (0.012)	-0.004 (0.010)	0.002 (0.010)
Days * Became winner		0.001 (0.012)	0.006 (0.010)	0.009 (0.010)
Days * Stayed winner		-0.0002 (0.011)	0.010 (0.010)	0.009 (0.009)
After * Became loser		0.197 (0.273)	-0.170 (0.234)	-0.130 (0.229)
After * Became winner		0.221 (0.253)	-0.099 (0.218)	-0.007 (0.213)
After * Stayed winner		0.100 (0.214)	-0.123 (0.184)	-0.090 (0.180)
Days * After * Became loser		0.037* (0.017)	0.018 (0.014)	0.0001 (0.014)
Days * After * Became winner		0.015 (0.015)	0.0005 (0.013)	-0.016 (0.013)
Days * After * Stayed winner		-0.012 (0.014)	-0.013 (0.012)	-0.012 (0.012)
Constant	5.390*** (0.060)	5.334*** (0.108)	2.625*** (0.137)	2.630*** (0.160)
Survey dummies	No	No	No	Yes
Observations	8,689	8,689	8,689	8,689
R ²	0.012	0.017	0.274	0.312
Adjusted R ²	0.012	0.016	0.272	0.309

Note:

*p<0.05; **p<0.01; ***p<0.001

Table A3. The effect of difference in party vote shares on satisfaction with democracy

	(1)	(2)	(3)	(4)
Days (before/after event)	-0.003 (0.003)	-0.018* (0.008)	-0.014* (0.007)	-0.008 (0.007)
After (government replacement)	0.391*** (0.088)	0.364* (0.149)	0.412** (0.129)	0.234 (0.127)
Status change				
Stayed loser (Reference)				
Became loser	0.376*** (0.074)	0.497* (0.241)	0.334 (0.209)	0.507* (0.213)
Became winner	0.386*** (0.069)	0.793*** (0.231)	0.604** (0.201)	0.557** (0.206)
Stayed winner	0.243*** (0.058)	0.332 (0.180)	0.404** (0.156)	0.461** (0.154)
Vote share difference (VS dif.)	-0.018*** (0.003)	0.022 (0.019)	0.018 (0.016)	0.025 (0.016)
Female			-0.142*** (0.041)	-0.136*** (0.040)
Satisfaction with economy			0.500*** (0.010)	0.459*** (0.010)
Education			0.103*** (0.016)	0.130*** (0.016)
Age			-0.002 (0.001)	-0.001 (0.001)
Days * After		0.022* (0.010)	0.010 (0.009)	0.007 (0.009)
Days * Became loser		0.003 (0.014)	0.007 (0.012)	0.004 (0.012)
Days * Became winner		0.018 (0.014)	0.013 (0.012)	0.014 (0.012)
Days * Stayed winner		0.010 (0.012)	0.018 (0.010)	0.014 (0.010)
After * Became loser		-0.435 (0.353)	-0.558 (0.306)	-0.381 (0.299)
After * Became winner		-0.299 (0.301)	-0.452 (0.262)	-0.313 (0.257)
After * Stayed winner		0.090 (0.227)	-0.223 (0.197)	-0.158 (0.193)
Days * VS dif.		0.002 (0.001)	0.001 (0.001)	0.001 (0.001)
After * VS dif.		-0.026 (0.023)	-0.032 (0.020)	-0.025 (0.020)
Became loser * VS dif.		0.075* (0.037)	0.020 (0.032)	0.009 (0.033)
Became winner * VS dif.		-0.137*** (0.028)	-0.066** (0.024)	-0.048* (0.024)
Stayed winner * VS dif.		-0.063* (0.025)	-0.048* (0.021)	-0.034 (0.021)
Days * After * Became loser		0.015 (0.022)	0.022 (0.019)	0.014 (0.019)
Days * After * Became winner		-0.007 (0.018)	-0.005 (0.016)	-0.017 (0.015)
Days * After * Stayed winner		-0.024 (0.015)	-0.021 (0.013)	-0.017 (0.012)
Days * After * VS dif.		-0.002 (0.002)	-0.001 (0.001)	-0.001 (0.001)
Days * Became loser * VS dif.		0.002 (0.002)	-0.0002 (0.002)	-0.001 (0.002)
Days * Became winner * VS dif.		-0.004* (0.002)	-0.001 (0.001)	-0.001 (0.001)
Days * Stayed winner * VS dif.		-0.007*** (0.002)	-0.005*** (0.002)	-0.004* (0.002)
After * Became loser * VS dif.		-0.130* (0.057)	-0.048 (0.050)	-0.023 (0.049)
After * Became winner * VS dif.		0.102** (0.036)	0.067* (0.031)	0.052 (0.031)
After * Stayed winner * VS dif.		0.051 (0.031)	0.062* (0.027)	0.047 (0.027)
Days* After * Became loser * VS dif.		-0.001 (0.004)	0.003 (0.003)	0.005 (0.003)
Days* After * Became winner * VS dif.		0.005* (0.002)	0.0002 (0.002)	-0.0002 (0.002)
Days* After * Stayed winner * VS dif.		0.008*** (0.002)	0.005* (0.002)	0.004* (0.002)
Constant	5.495*** (0.062)	5.368*** (0.118)	2.695*** (0.145)	2.539*** (0.168)
Survey dummies	No	No	No	Yes
Observations	8,380	8,380	8,380	8,380
R ²	0.013	0.032	0.271	0.307
Adjusted R ²	0.013	0.029	0.268	0.303

Note:

*p<0.05; **p<0.01; ***p<0.001

Table A4. The effect of difference in party seat shares on satisfaction with democracy

	(1)	(2)	(3)	(4)
Days (before/after event)	-0.003 (0.003)	-0.019* (0.008)	-0.014 (0.007)	-0.007 (0.007)
After (government replacement)	0.422*** (0.087)	0.405** (0.144)	0.401** (0.125)	0.215 (0.123)
Status change				
Stayed loser (Reference)				
Became loser	0.419*** (0.073)	0.737** (0.245)	0.429* (0.213)	0.557** (0.216)
Became winner	0.363*** (0.068)	0.960*** (0.233)	0.607** (0.202)	0.503* (0.204)
Stayed winner	0.273*** (0.058)	0.379* (0.176)	0.380* (0.153)	0.427** (0.150)
Seat share difference (SS dif.)	-0.013*** (0.003)	0.026 (0.019)	0.008 (0.016)	-0.001 (0.016)
Female			-0.134*** (0.040)	-0.129** (0.040)
Satisfaction with economy			0.503*** (0.010)	0.463*** (0.010)
Education			0.098*** (0.016)	0.126*** (0.016)
Age			-0.002 (0.001)	-0.001 (0.001)
Days * After		0.024* (0.010)	0.010 (0.008)	0.006 (0.009)
Days * Became loser		0.006 (0.015)	0.009 (0.013)	0.005 (0.013)
Days * Became winner		0.024 (0.014)	0.014 (0.012)	0.012 (0.012)
Days * Stayed winner		0.010 (0.012)	0.017 (0.010)	0.014 (0.010)
After * Became loser		-0.536 (0.349)	-0.547 (0.302)	-0.380 (0.295)
After * Became winner		-0.437 (0.302)	-0.456 (0.262)	-0.252 (0.256)
After * Stayed winner		0.070 (0.223)	-0.198 (0.193)	-0.149 (0.189)
Days * SS dif.		0.002 (0.001)	0.001 (0.001)	0.00001 (0.001)
After * SS dif.		-0.023 (0.023)	-0.019 (0.020)	-0.005 (0.020)
Became loser * SS dif.		0.096** (0.035)	0.045 (0.031)	0.048 (0.031)
Became winner * SS dif.		-0.144*** (0.026)	-0.064** (0.023)	-0.027 (0.023)
Stayed winner * SS dif.		-0.044* (0.021)	-0.020 (0.018)	-0.002 (0.018)
Days * After * Became loser		0.009 (0.022)	0.015 (0.019)	0.006 (0.018)
Days * After * Became winner		-0.014 (0.018)	-0.005 (0.016)	-0.015 (0.015)
Days * After * Stayed winner		-0.024 (0.014)	-0.020 (0.013)	-0.016 (0.012)
Days * After * SS dif.		-0.002 (0.002)	-0.0002 (0.001)	0.0003 (0.001)
Days * Became loser * SS dif.		0.002 (0.002)	0.001 (0.002)	0.0002 (0.002)
Days * Became winner * SS dif.		-0.004* (0.002)	-0.001 (0.001)	-0.0001 (0.001)
Days * Stayed winner * SS dif.		-0.004** (0.002)	-0.003 (0.001)	-0.002 (0.001)
After * Became loser * SS dif.		-0.125* (0.052)	-0.052 (0.045)	-0.044 (0.044)
After * Became winner * SS dif.		0.103** (0.034)	0.059* (0.030)	0.038 (0.029)
After * Stayed winner * SS dif.		0.028 (0.026)	0.032 (0.023)	0.020 (0.022)
Days* After * Became loser * SS dif.		-0.002 (0.003)	0.001 (0.003)	0.001 (0.003)
Days* After * Became winner * SS dif.		0.004* (0.002)	0.00002 (0.002)	-0.001 (0.002)
Days* After * Stayed winner * SS dif.		0.004* (0.002)	0.002 (0.002)	0.001 (0.002)
Constant	5.450*** (0.061)	5.309*** (0.114)	2.691*** (0.142)	2.596*** (0.165)
Survey dummies	No	No	No	Yes
Observations	8,545	8,545	8,545	8,545
R ²	0.014	0.035	0.275	0.311
Adjusted R ²	0.013	0.031	0.272	0.307

Note:

*p<0.05; **p<0.01; ***p<0.001

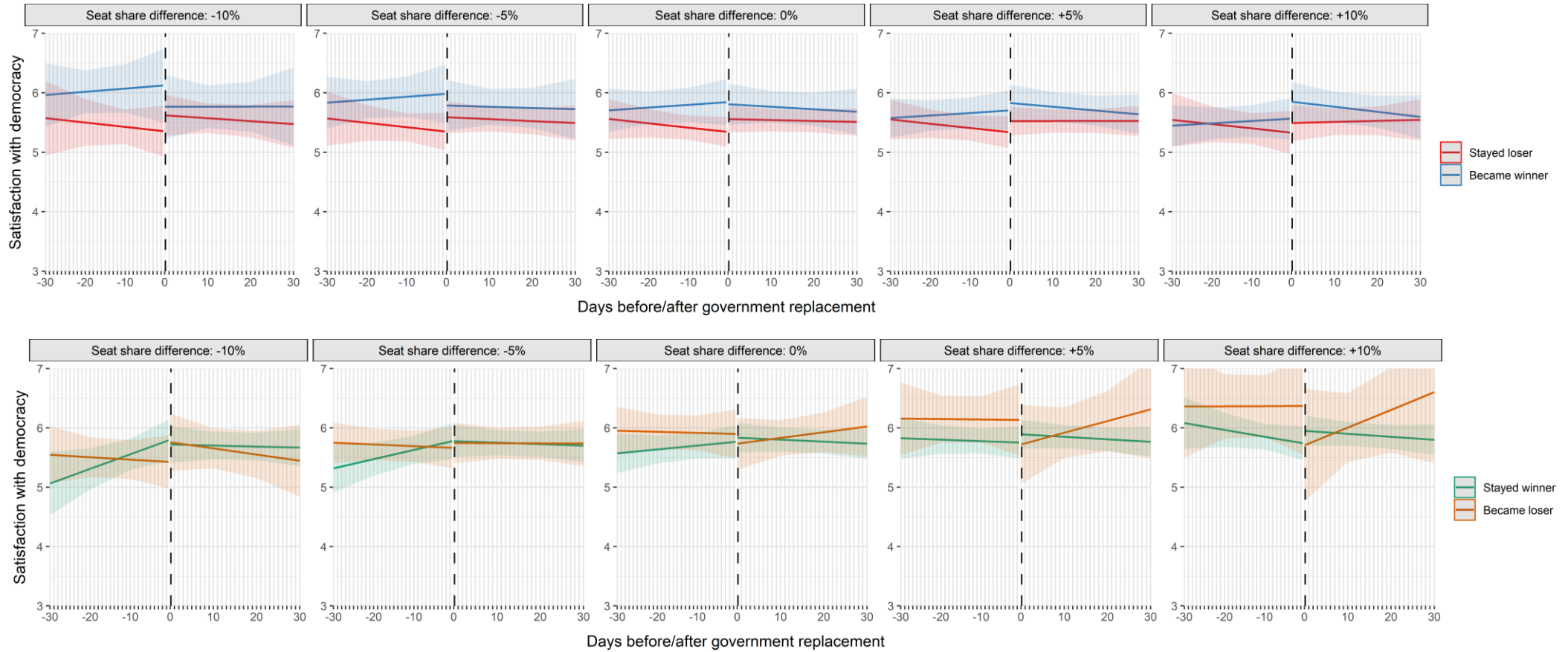


Figure A2. Comparison of estimated pre- and post-government replacement satisfaction among winners and losers depending on party seat shares.

Note: The marginal effects of the interaction terms from Model 4 in Table A4 are visualized.

Table A5. The effect of feeling close to a party on satisfaction with democracy.

	(1)	(2)	(3)	(4)
Days (before/after event)	-0.003 (0.003)	-0.009 (0.013)	-0.011 (0.011)	-0.007 (0.011)
After (government replacement)	0.415*** (0.086)	0.270 (0.242)	0.286 (0.209)	0.120 (0.205)
Status change				
Stayed loser (Reference)				
Became loser	0.496*** (0.071)	-0.087 (0.352)	0.221 (0.304)	0.509 (0.305)
Became winner	0.319*** (0.066)	-0.466 (0.342)	-0.133 (0.296)	0.022 (0.295)
Stayed winner	0.307*** (0.057)	-0.097 (0.293)	0.137 (0.253)	0.237 (0.248)
Close (to a party = Yes)	0.621*** (0.049)	0.298 (0.229)	0.285 (0.197)	0.135 (0.194)
Female			-0.115** (0.040)	-0.112** (0.039)
Satisfaction with economy			0.504*** (0.010)	0.462*** (0.010)
Education			0.101*** (0.016)	0.124*** (0.016)
Age			-0.003* (0.001)	-0.002 (0.001)
Days * After		0.015 (0.016)	0.008 (0.014)	0.005 (0.013)
Days * Became loser		-0.017 (0.021)	0.008 (0.018)	0.016 (0.018)
Days * Became winner		-0.013 (0.021)	0.003 (0.018)	0.002 (0.018)
Days * Stayed winner		-0.003 (0.019)	0.010 (0.017)	0.012 (0.016)
After * Became loser		-0.433 (0.500)	-0.508 (0.431)	-0.481 (0.423)
After * Became winner		0.713 (0.451)	0.248 (0.390)	0.390 (0.382)
After * Stayed winner		0.468 (0.373)	0.086 (0.322)	0.093 (0.316)
Days * Close		-0.003 (0.016)	0.003 (0.014)	0.001 (0.013)
After * Close		0.097 (0.296)	0.061 (0.255)	0.095 (0.250)
Became loser * Close		0.240 (0.425)	-0.137 (0.367)	-0.191 (0.360)
Became winner * Close		0.740 (0.412)	0.429 (0.356)	0.472 (0.349)
Stayed winner * Close		0.593 (0.359)	0.305 (0.310)	0.278 (0.304)
Days * After * Became loser		0.061* (0.031)	0.016 (0.027)	-0.008 (0.026)
Days * After * Became winner		0.015 (0.027)	-0.008 (0.024)	-0.019 (0.023)
Days * After * Stayed winner		-0.015 (0.024)	-0.014 (0.020)	-0.015 (0.020)
Days * After * Close		0.002 (0.019)	-0.001 (0.017)	0.0004 (0.016)
Days * Became loser * Close		-0.007 (0.025)	-0.018 (0.022)	-0.020 (0.022)
Days * Became winner * Close		0.016 (0.025)	0.004 (0.021)	0.011 (0.021)
Days * Stayed winner * Close		0.003 (0.024)	-0.0002 (0.020)	-0.003 (0.020)
After * Became loser * Close		0.955 (0.595)	0.547 (0.514)	0.508 (0.504)
After * Became winner * Close		-0.648 (0.544)	-0.454 (0.470)	-0.576 (0.460)
After * Stayed winner * Close		-0.473 (0.457)	-0.246 (0.394)	-0.229 (0.386)
Days * After * Became loser * Close		-0.034 (0.037)	0.003 (0.032)	0.010 (0.031)
Days * After * Became winner * Close		-0.001 (0.033)	0.010 (0.028)	0.003 (0.028)
Days * After * Stayed winner * Close		0.007 (0.029)	0.0001 (0.025)	0.003 (0.025)
Constant	4.991*** (0.068)	5.160*** (0.185)	2.543*** (0.190)	2.602*** (0.207)
Survey dummies	No	No	No	Yes
Observations	8,583	8,583	8,583	8,583
R ²	0.030	0.037	0.283	0.315
Adjusted R ²	0.029	0.034	0.280	0.311

Note:

*p<0.05; **p<0.01; ***p<0.001