

## Supplementary Material



Image 1: Port Rashid, 1970. ©LenChapman

## Case 1: Heart of Sharjah



Image 2: Left: Historical district/Sharjah Art Foundation. Right: Sharjah's port facing the historical center.



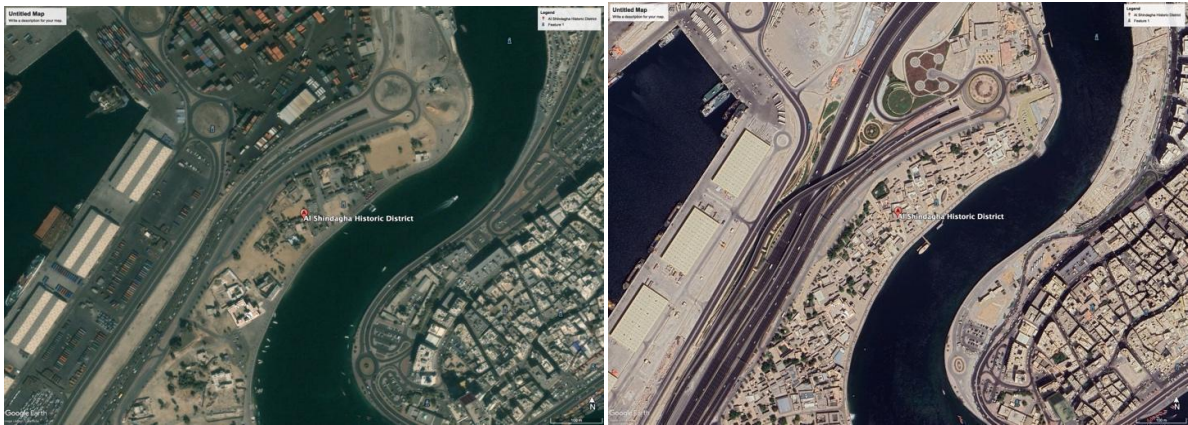


Image 3. Left: Renovated Bait Alserkal, Sharjah. Right: Path between the art galleries, Sharjah



Image 4. Square in front of the offices of the SAF and Bait Alserkal used as a public space by the local residents.

**Case 2: Al Shindagha Historical District, Dubai**





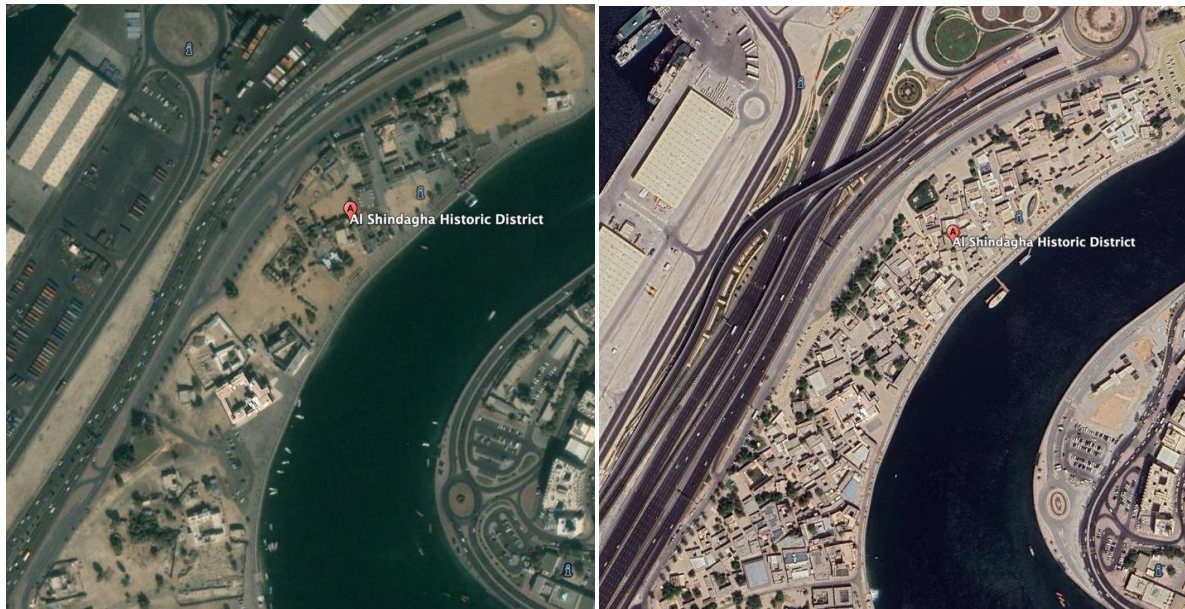


Image 5: Evolution/reconstruction of Al Shindagha historical district. Left: Al Shindagha 2001, Right: Al Shindagha 2024

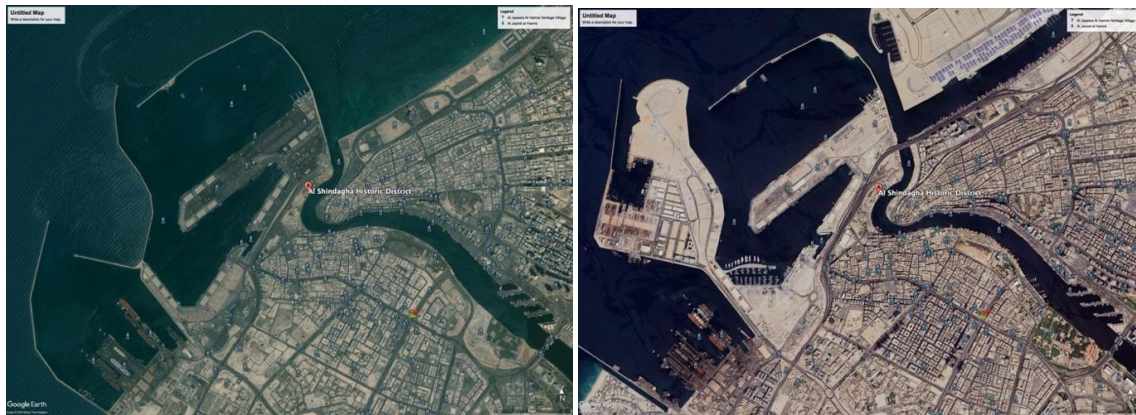


Image 6: the evolution of the port's infrastructure and extension in proximity to the Shindagha district. Left The port 2001, Right: the port 2023



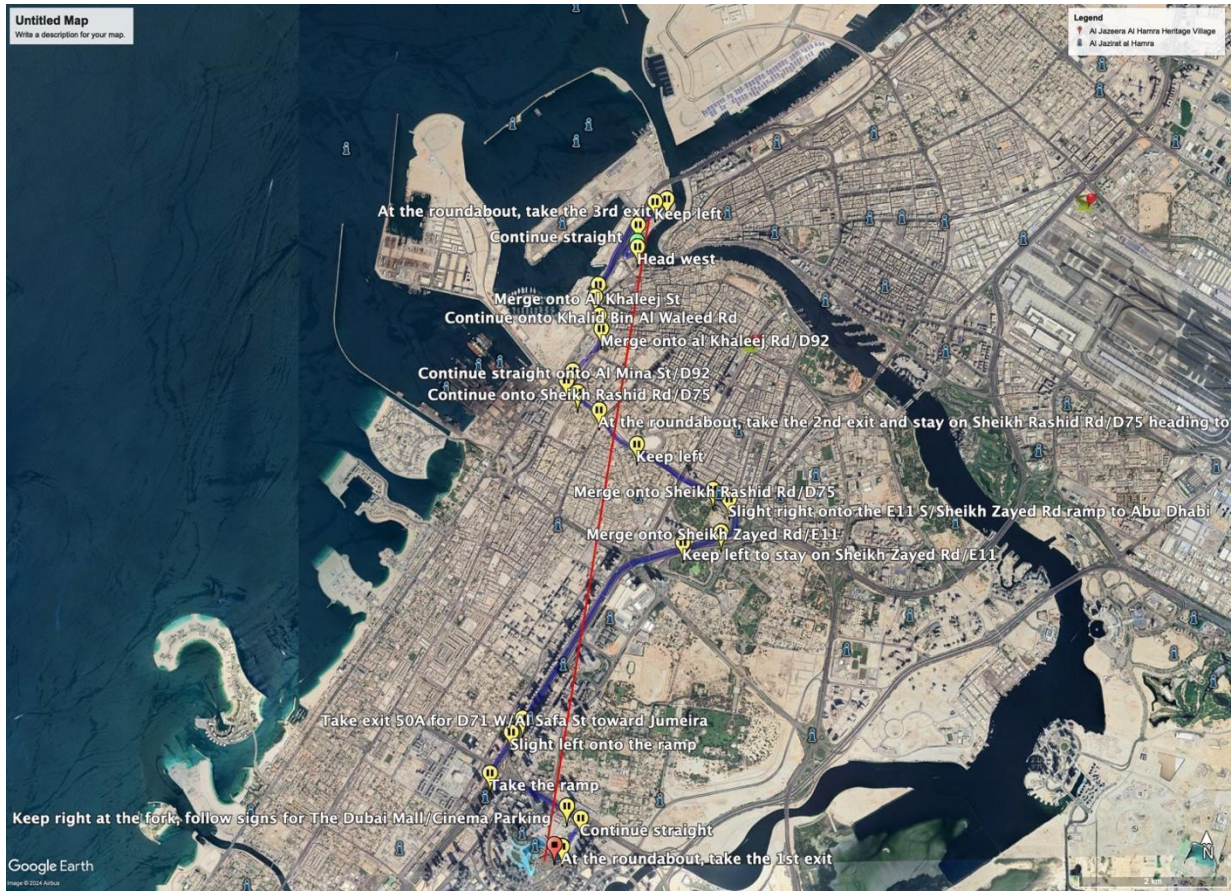


Image 7: the approximate 10 km distance from Al Shindagha to the modern center/downtown of Dubai.



Image 8: Al Shindagha museums district

### Case 3: MiZa, Abu Dhabi



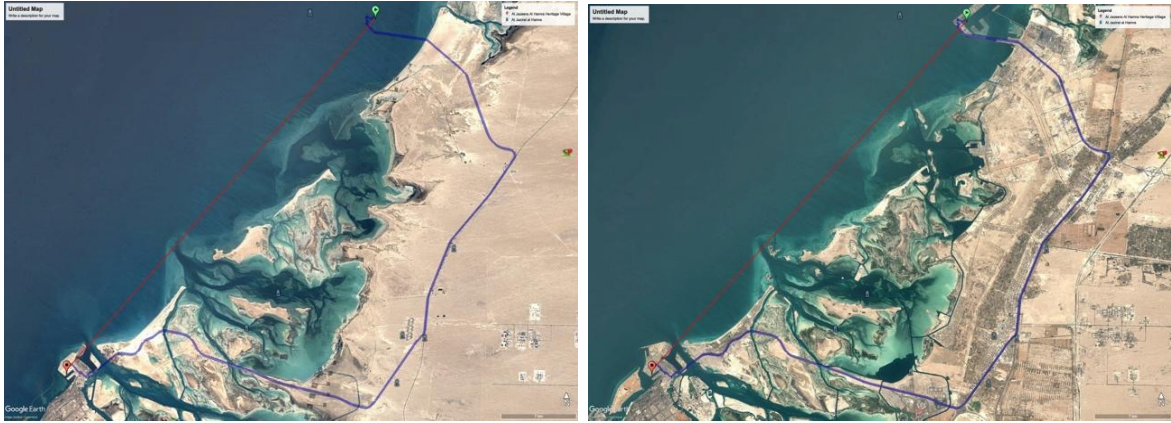


Image 9: New Abu Dhabi port location, the green dot which migrated to the northern part of Abu Dhabi leaving the MiZa area.

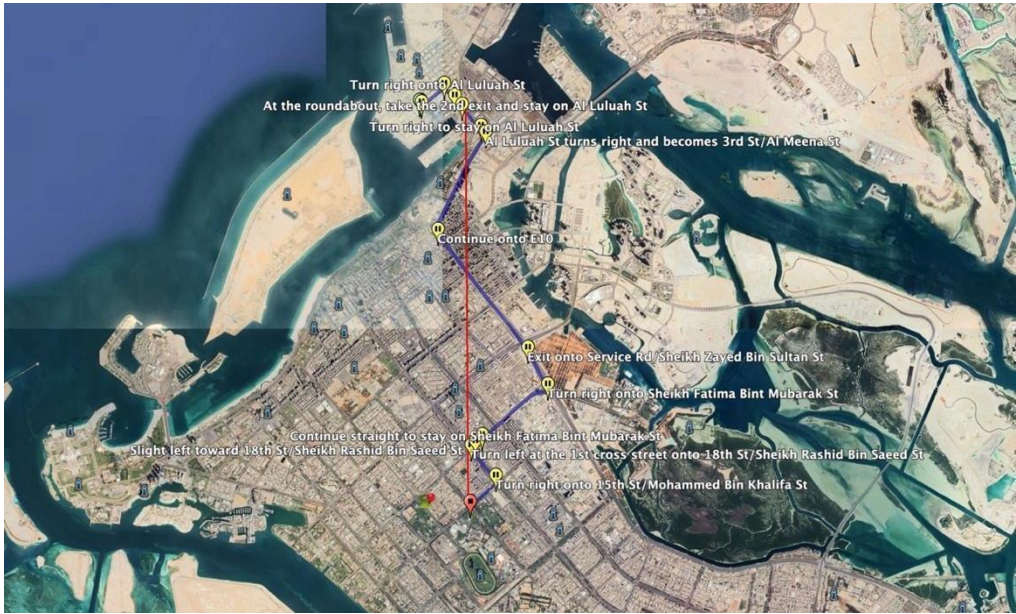


Image 10: approximate 48 km distance from MiZa to the modern center/downtown of Abu Dhabi

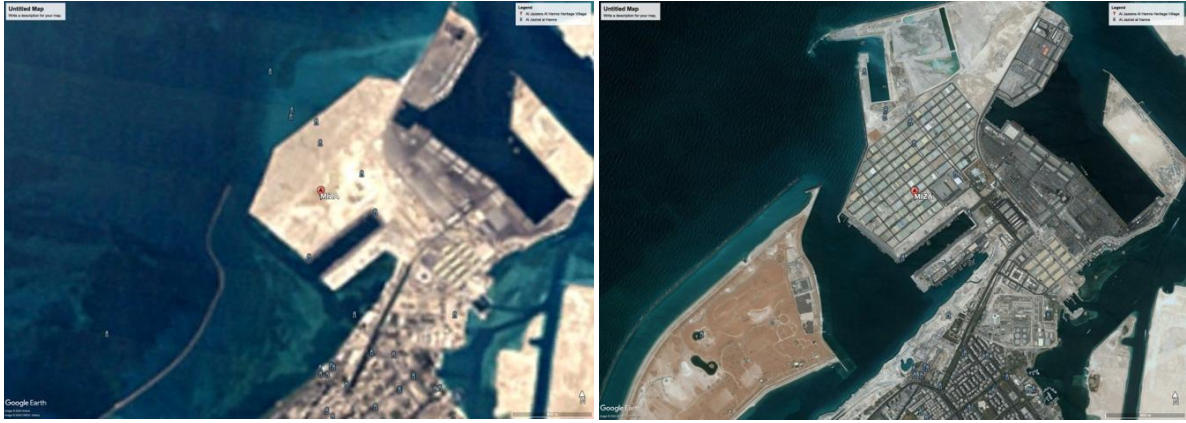


Image 11: the evolution of Miza site: Left 1984, right: 2004.





Image 12: Current state of MiZa site 2023 after the abandonment of the warehouses that used to support the export. In dark brown is the art space Warehouse 420 .







Image 13: Current state of MiZa site including the abandoned warehouses that used to support the ex-port. In dark brown is the art space Warehouse 420 .



Image 14: Northern MiZa- a land abandoned and used as public space to play cricket by the workers.

#### Case 4: A Jazeera Al Hamra Ghost village, Ras Al Khaimah

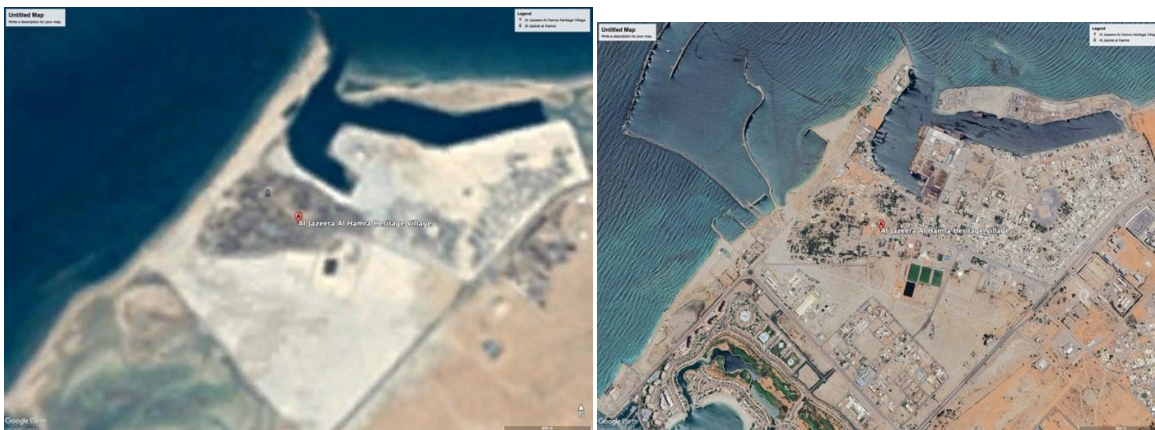


Image 15: the evolution of the port and the infrastructure in proximity to Al Jazeera Al Hamra heritage village. Left : 1984, Right : 2024



Image 16: the evolution and reconstruction of the Al Jazeera Al Hamra heritage villa. Left : 2001, right : 2023



Image 17: Approximate 25km distance from Al Jazeera Al Hamra to the modern center/downtown of Ras Al Khaimah





Image 18: the ongoing renovation works at Al Jazeera Al Hamra of Ras Al Khaimah



Image 19: the still abandoned parts of Al Jazeera AAl Hamra of Ras Al Khaimah, known as the Ghost Village.





Image 20: the end of the village towards the port's zone.

### Case 5: Umm Al Quwain Historical District

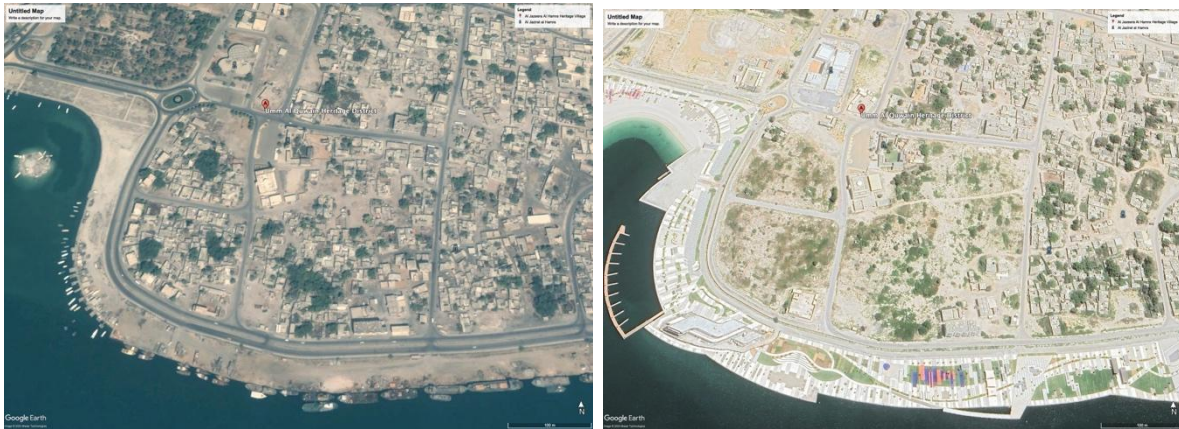


Image 21: Evolution of the historical district of Umm Al Quwain and its waterfront. Left :2007, right: 2023

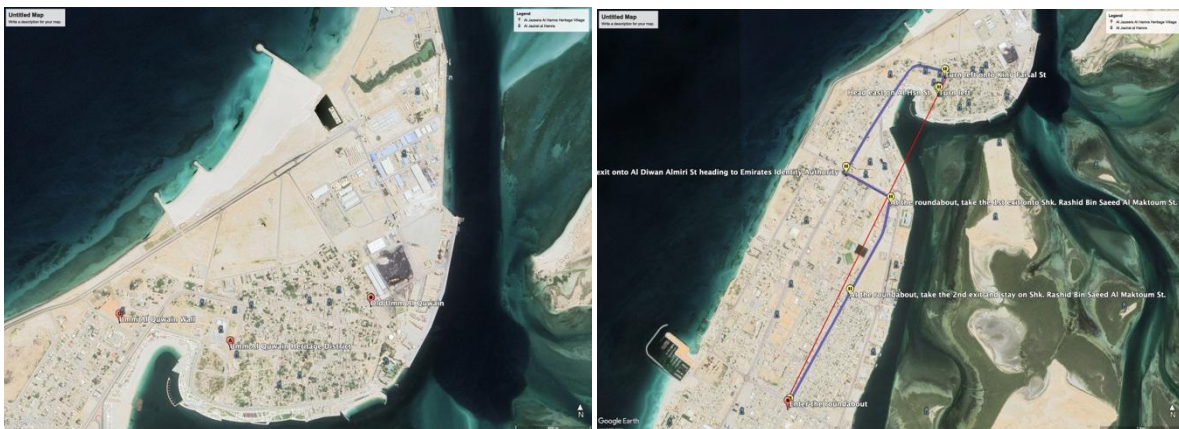


Image 22: Left: Approximate distance of the area to the modern center of Umm Al Quwain. Right: Umm Al Quwain's port north of the historical district.





Image 23: Umm Al Quwain’s waste / buffering zone between the port and the semi abandoned historical district.



Image 24: Umm Al Quwain’s newly rehabilitated waterfront-corniche.